



ELECTRONIC COPY

LABORATORY GROWN DIAMOND REPORT

November 27, 2024  
IGI Report Number LG666416572  
Description LABORATORY GROWN DIAMOND  
Shape and Cutting Style CUT CORNERED RECTANGULAR MODIFIED BRILLIANT  
Measurements 12.92 X 11.55 X 7.46 MM

GRADING RESULTS

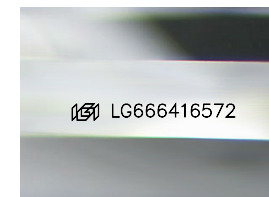
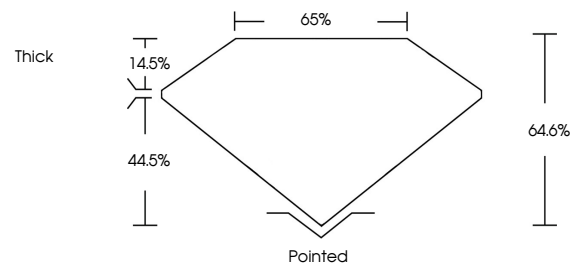
Carat Weight 10.12 CARATS  
Color Grade FANCY VIVID BLUE  
Clarity Grade VS 2

ADDITIONAL GRADING INFORMATION

Polish EXCELLENT  
Symmetry EXCELLENT  
Fluorescence NONE  
Inscription(s) IGI LG666416572

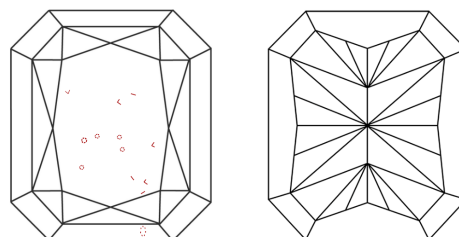
Comments: This Laboratory Grown Diamond was created by Chemical Vapor Deposition (CVD) growth process.  
Indications of post-growth treatment.

PROPORTIONS



Sample Image Used

CLARITY CHARACTERISTICS



KEY TO SYMBOLS

Red symbols indicate internal characteristics.  
Green symbols indicate external characteristics.

COLOR

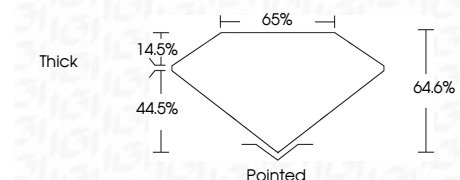
D E F G H I J Faint Very Light Light

CLARITY

IF WS<sup>1-2</sup> VS<sup>1-2</sup> SI<sup>1-2</sup> I<sup>1-3</sup>  
Internally Flawless Very Very Slightly Included Very Slightly Included Slightly Included Included



November 27, 2024  
IGI Report Number LG666416572  
Description LABORATORY GROWN DIAMOND  
Shape and Cutting Style CUT CORNERED RECTANGULAR MODIFIED BRILLIANT  
Measurements 12.92 X 11.55 X 7.46 MM  
GRADING RESULTS  
Carat Weight 10.12 CARATS  
Color Grade FANCY VIVID BLUE  
Clarity Grade VS 2



ADDITIONAL GRADING INFORMATION

Polish EXCELLENT  
Symmetry EXCELLENT  
Fluorescence NONE  
Inscription(s) IGI LG666416572  
Comments: This Laboratory Grown Diamond was created by Chemical Vapor Deposition (CVD) growth process.  
Indications of post-growth treatment.



November 27, 2024  
IGI Report No LG666416572  
CUT CORNERED RECT. MODIFIED BRILLIANT  
12.92 X 11.55 X 7.46 MM  
Carat Weight 10.12 CARATS  
Color Grade FANCY VIVID BLUE  
Clarity Grade VS 2  
Depth 64.6%  
Table 65%  
Girdle Thick  
Culet Pointed  
Polish EXCELLENT  
Symmetry EXCELLENT  
Fluorescence NONE  
Inscription(s) IGI LG666416572  
Comments: This Laboratory Grown Diamond was created by Chemical Vapor Deposition (CVD) growth process.  
Indications of post-growth treatment.