



ELECTRONIC COPY

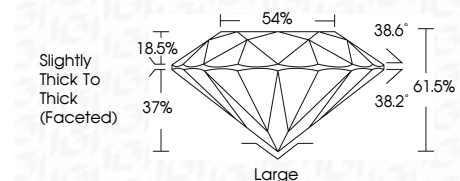
LG668424380
Report verification at igi.org



December 4, 2024
IGI Report Number LG668424380
Description LABORATORY GROWN DIAMOND
Shape and Cutting Style OLD EUROPEAN CUT
Measurements 10.81 - 10.93 X 6.68 MM

GRADING RESULTS

Carat Weight 5.40 CARATS
Color Grade F
Clarity Grade VS 2



ADDITIONAL GRADING INFORMATION

Polish EXCELLENT
Symmetry EXCELLENT
Fluorescence NONE
Inscription(s) IGI LG668424380
Comments: This Laboratory Grown Diamond was created by Chemical Vapor Deposition (CVD) growth process. Type IIa



December 4, 2024
IGI Report No LG668424380
OLD EUROPEAN CUT
10.81 - 10.93 X 6.68 MM
5.40 CARATS
F
61.0%
54%
Slightly Thick To Thick (Faceted)
Large
EXCELLENT
EXCELLENT
NONE
IGI LG668424380
Comments: This Laboratory Grown Diamond was created by Chemical Vapor Deposition (CVD) growth process. Type IIa

December 4, 2024
IGI Report Number LG668424380
Description LABORATORY GROWN DIAMOND
Shape and Cutting Style OLD EUROPEAN CUT
Measurements 10.81 - 10.93 X 6.68 MM

GRADING RESULTS

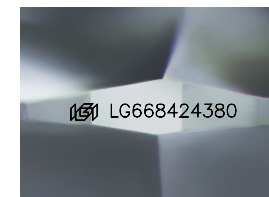
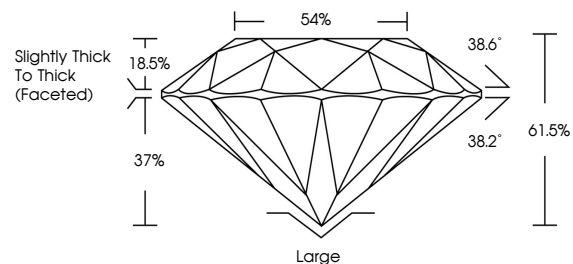
Carat Weight 5.40 CARATS
Color Grade F
Clarity Grade VS 2

ADDITIONAL GRADING INFORMATION

Polish EXCELLENT
Symmetry EXCELLENT
Fluorescence NONE
Inscription(s) IGI LG668424380

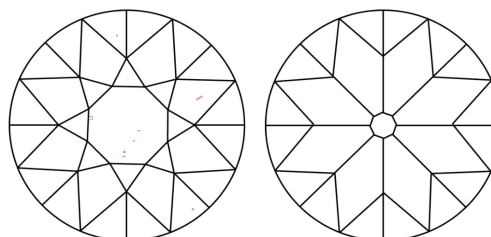
Comments: This Laboratory Grown Diamond was created by Chemical Vapor Deposition (CVD) growth process. Type IIa

PROPORTIONS



Sample Image Used

CLARITY CHARACTERISTICS



KEY TO SYMBOLS

Red symbols indicate internal characteristics.
Green symbols indicate external characteristics.

COLOR

D E F G H I J Faint Very Light Light

CLARITY

IF WS 1-2 VS 1-2 SI 1-2 I 1-3
Internally Flawless Very Very Slightly Included Very Slightly Included Slightly Included Included